



**← STAGE
ETAPPE ↓** **2 →**

Train

SOUTH EXTENSION PROLONGEMENT **SUD**

Lines 2 and 4 update

Transit Services continues to work closely with TNEXT to close out remaining works:

- Bearing Condition Monitoring System
- Locomotive Video and Voice Recorder (LVVR)
- Landscaping
- ✓ Rail profile improvements on the conformal frog have been completed at Beech and Brookfield



A decorative graphic consisting of four thick, diagonal lines meeting at a central point. The lines are colored blue, red, yellow, and green, and each has a circular gradient effect. The text is overlaid on the yellow and red lines.

EAST EXTENSION
PROLONGEMENT **EST**

Pathway to passenger service

O-Train Line 1 East Extension

We are here

Testing and
Commissions and
Line 1 integration



**Substantial
Completion**



Trial
Running



Final System
Preparations



Passenger
Service



Ongoing work on the East Extension

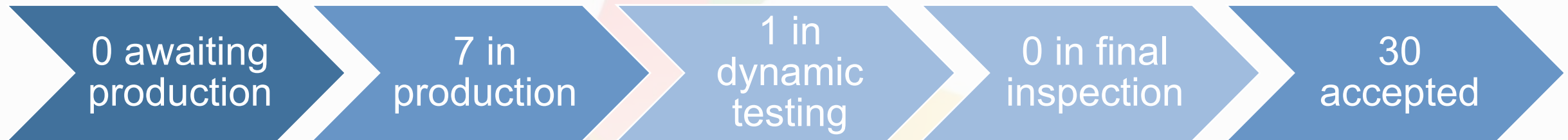
Underway:

- Updates to the train control system software ongoing
- Adjustments ongoing to platform edge cameras to ensure safety
- Minor deficiency correction
- Staff and stakeholder familiarization
- Preparations for Trial Running

After Revenue Service:

- Any remaining minor deficiency correction
- Completion of Highway 174 works

Stage 2 Vehicle Delivery





WEST EXTENSION
PROLONGEMENT **OUEST**

Westboro Station



Kichi Zìbì Station



Sherbourne Station



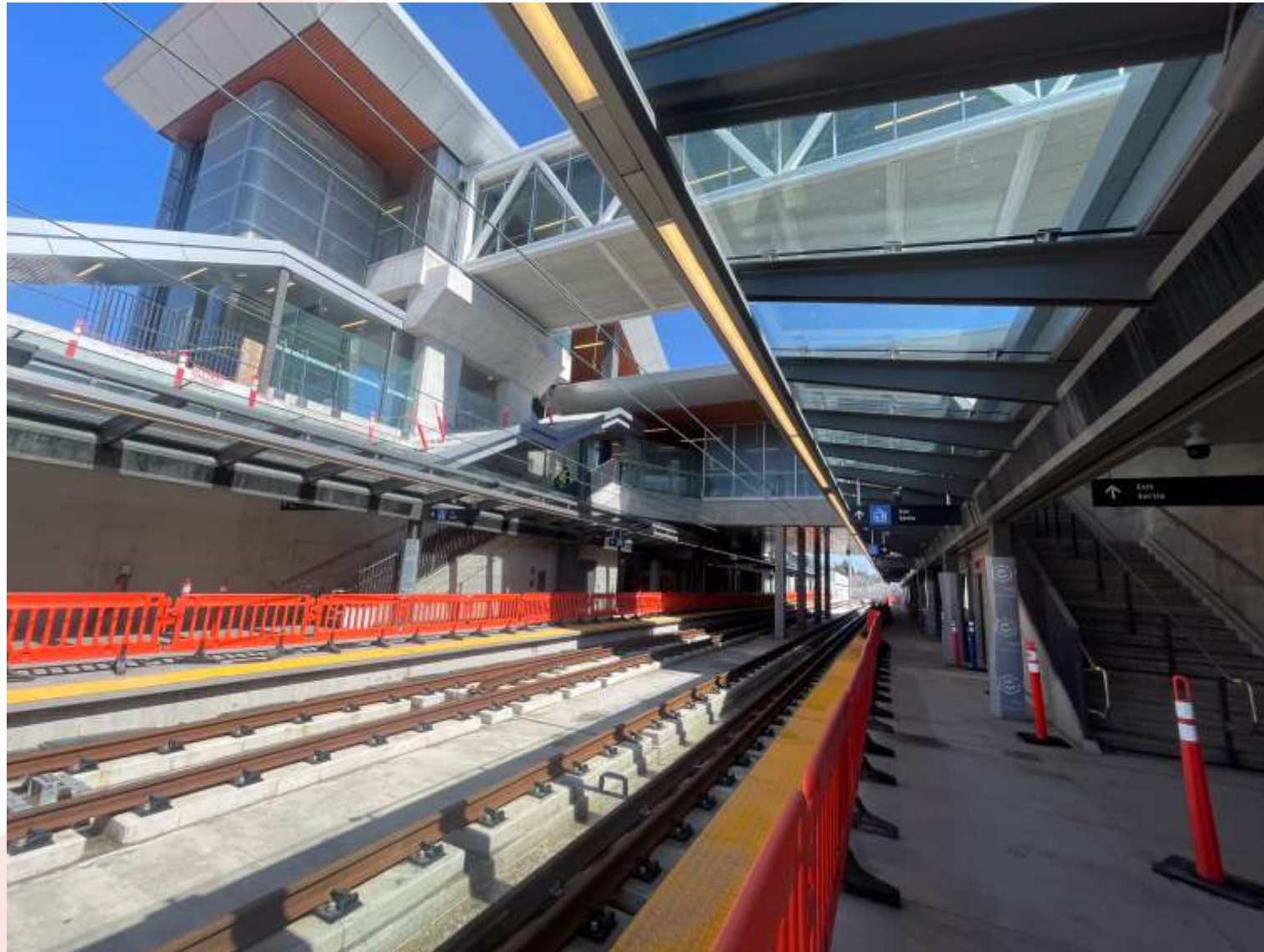
New Orchard Station



Lincoln Fields Station



Queensview Station



Pinecrest Station



Bayshore Station



Moodie Station



Algonquin Station



Iris Station



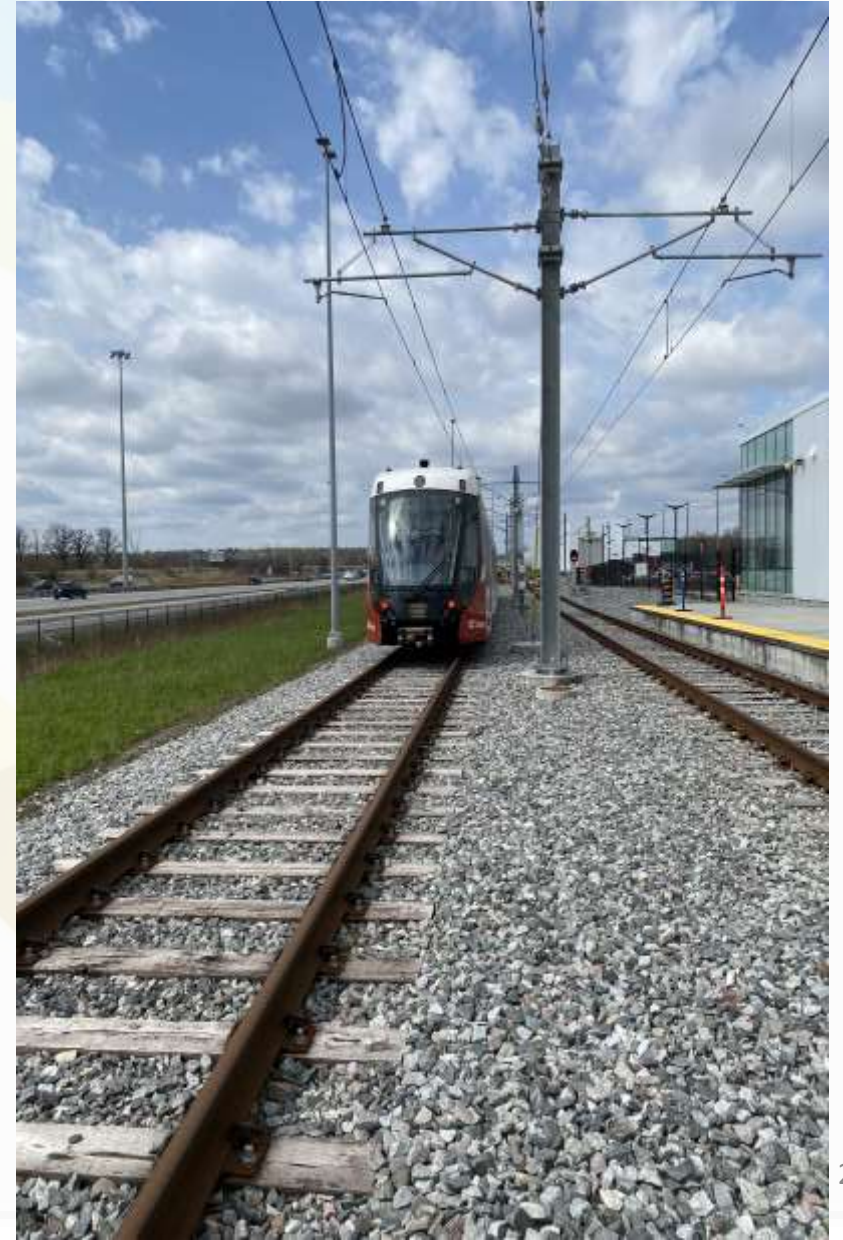
Corkstown Yard Light Maintenance and Storage Facility (LMSF)



West Extension 2026 Milestones

Q2 and Q3 2026:

- Complete installation of the overhead catenary system (OCS)
- Line 1 and West Extension OCS tie-in
- OCS energization
- Additional trains in the West Extension for testing
- Train testing end to end in the west extension
- Complete bus loop construction
- Technical Standards and Safety Authority (TSSA) certification of elevators and escalators
- Ongoing civil and road works



West Extension 2026 Milestones

Q4 2026:

- Complete cable pulling through the tunnels
- Tunnel ventilation system commissioning
- Bus Operator buildings Occupancy Permits



O-Train West Estimated Timeline

- There are no changes to the project timeline from March 2026
- Substantial Completion currently expected in 2027
- Independent expert will conduct a review of the project timeline and critical elements required to achieve Substantial Completion
- An update will be provided once the review is complete

Work Activity	2026				2027			
1. Completion of Track & Systems Installation	█	█	█	█	█	█	█	█
2. Systemwide Commissioning	█	█	█	█	█	█	█	█
3. Operations & Maintenance Training	█	█	█	█	█	█	█	█
4. EWC Handover to City	█	█	█	█	█	█	█	█
5. Preparations for Opening	█	█	█	█	█	█	█	█

Traffic and Mobility Impacts

Working with the Community

- We know that traffic disruptions have been impactful and frustrating for everyone
- The procedure for planning, coordinating, and communicating traffic and mobility impacts is being reviewed
- This review will ensure close coordination between Traffic Services, other City projects, Ministry of Transportation of Ontario, and impacted communities
- Once this review is complete, a full update on road works will be provided
- Our commitment to every community:
 - Coordinate across City departments to mitigate impacts
 - Increase the amount of information provided
 - Provide more notice before work begins
 - Provide clear communications

East Extension Ongoing Road Works

- Final paving from OR174/417 split to Blair complete
- Work is underway to finalize an appropriate plan to repave Highway 174 between Blair and Montreal Road; updates will be provided
- Traffic and mobility plan for Highway 174 will focus on:
 - Mitigating traffic and mobility impacts for every road user
 - Minimize weekend impacts to the community
 - Coordination with other projects, Traffic Services and community events in the summer
 - Consulting with ward Councillors
 - Providing more notice to residents of upcoming impacts
- Intermittent, off-peak closures may occur on shoulders, lanes and ramps to complete finishing works including landscaping, ditching and guardrails

West Extension Ongoing Hwy 417 Works

- Lane reductions on Highway 417 between Woodroffe and Pinecrest
 - Overhead signage foundation construction
 - Accelerated schedule expect to be complete by July 6
- Southbound Pinecrest / Greenbank on-ramp to eastbound Highway 417
 - Closed to help mitigate traffic impacts on eastbound Highway 417 due to overhead signage work
 - Will open when the lane reductions on Highway 417 are lifted
- Northbound Moodie on-ramp to westbound Highway 417
 - Closed for civil work, flatworks, electrical and drainage work
- Northbound BRT right turn channel and eastside MUP closed at Holly Acres Road
 - To complete traffic and street lighting, drainage, utility and eastside MUP works along Holly Acres and reconstruction of Transitway ramp
 - East sidewalk closed, west remains open
 - Work ongoing to early September

West Extension Ongoing Road Works

- Moodie-Corkstown Road
 - Eastbound lane at Corkstown Road closed for utilities, curb and paving works to the end of June
 - Additional westbound day-time off peak lane closure occurring intermittently
- Kichi Zībī Mīkan
 - Overnight closures east and west bound for barrier installation to the end of June

West Extension Ongoing Major Work: Richmond Road

- Accelerated schedule in the Woodroffe & Richmond intersection is ongoing. Electrical and flatworks currently ongoing
- Sanitary and watermain replacements on Byron between Compton and Richardson ongoing
- Wet utilities being completed between Woodroffe and Cleary ahead of the start of permanent flatworks
- Concrete removal from sanitary pipe and watermain install at Cleary ongoing
- Permanent sidewalk and multiuse pathway ongoing around New Orchard Station
- Select section of permanent sidewalk, cycle track, and roadway will be completed by the end of the year
- Work will continue in 2027 and expected to be completed in 2028



West Extension Ongoing Major Work: Richmond Road

Traffic and mobility impacts

- Closure of Woodroffe at Richmond Road ongoing for utility work and building of the upgraded fully protected intersection
- Closure of Byron between Compton and Richardson for utility works
- Cleary intersection shifted for deep utilities work
- Richmond local pedestrian detour in place for deep utility works ongoing
- Traffic adjustments ongoing on Richmond (daytime off-peak) by New Orchard Station for sidewalk/multi-use pathway works



West Extension Ongoing Major Work: Richmond Road

Pedestrian & Cycling Access

- Temporary crossings and short route adjustments to provide access
- Sidewalk and multi-use pathway reconstruction underway
- Cycling detours to preserve east-west connectivity
- Accessibility accommodations
- Enhanced wayfinding



Questions?

